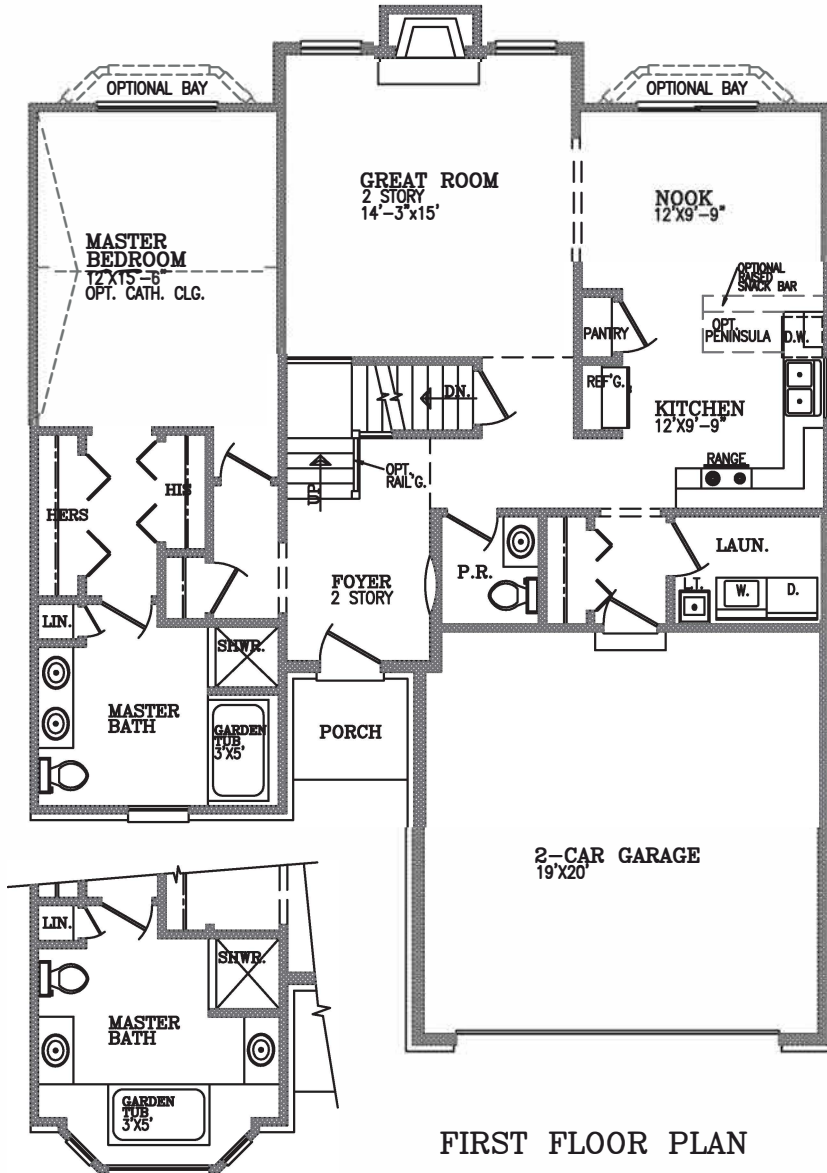
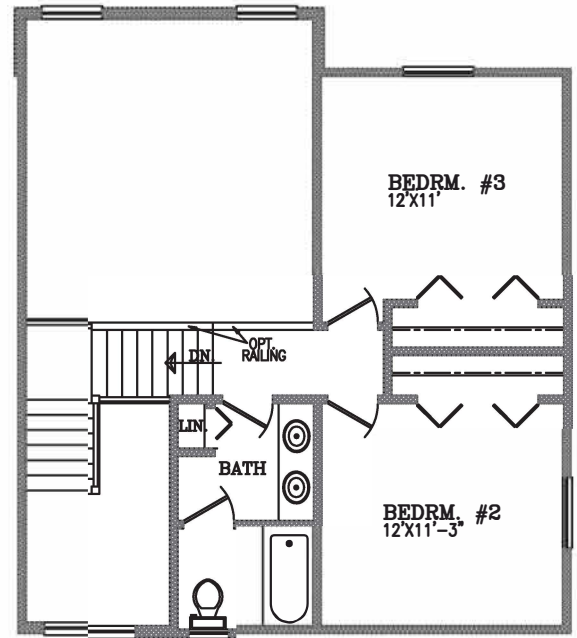


THE PENINSULA

The Peninsula, our 1685 square foot 3 bedroom, 2-1/2 bath cape cod, offers a first floor master suite with a full bath, 2 bedrooms on the second floor with a full bath, an additional 1/2 bath on main floor, laundry room, full basement and attached 2 car garage. The entry provides a dramatic two-story foyer with a great room that opens up into the nook/kitchen area. The great room offers a gas fireplace and the master suite provides for his & her closets with an option for separate his & her vanities. Optional 4th bedroom or a bonus room over garage are available.



FIRST FLOOR PLAN



SECOND FLOOR PLAN

OPT. BAY @ MASTER BATH
W/ HIS & HERS VANITIES
STANDARD WITH ELEVATION 'C'



Model Home & Sales Office
734.422.2577
www.soavehomesinc.com